



# **ZAMBIA NATIONAL PUBLIC HEALTH INSTITUTE**

**DR. VICTOR M. MUKONKA - DIRECTOR**

***BSc, MB, ChB, DCH, DIH, DTM, Cert Neonatology, MPH, PhD Public Health***

1

# Outbreaks dehumanize communities

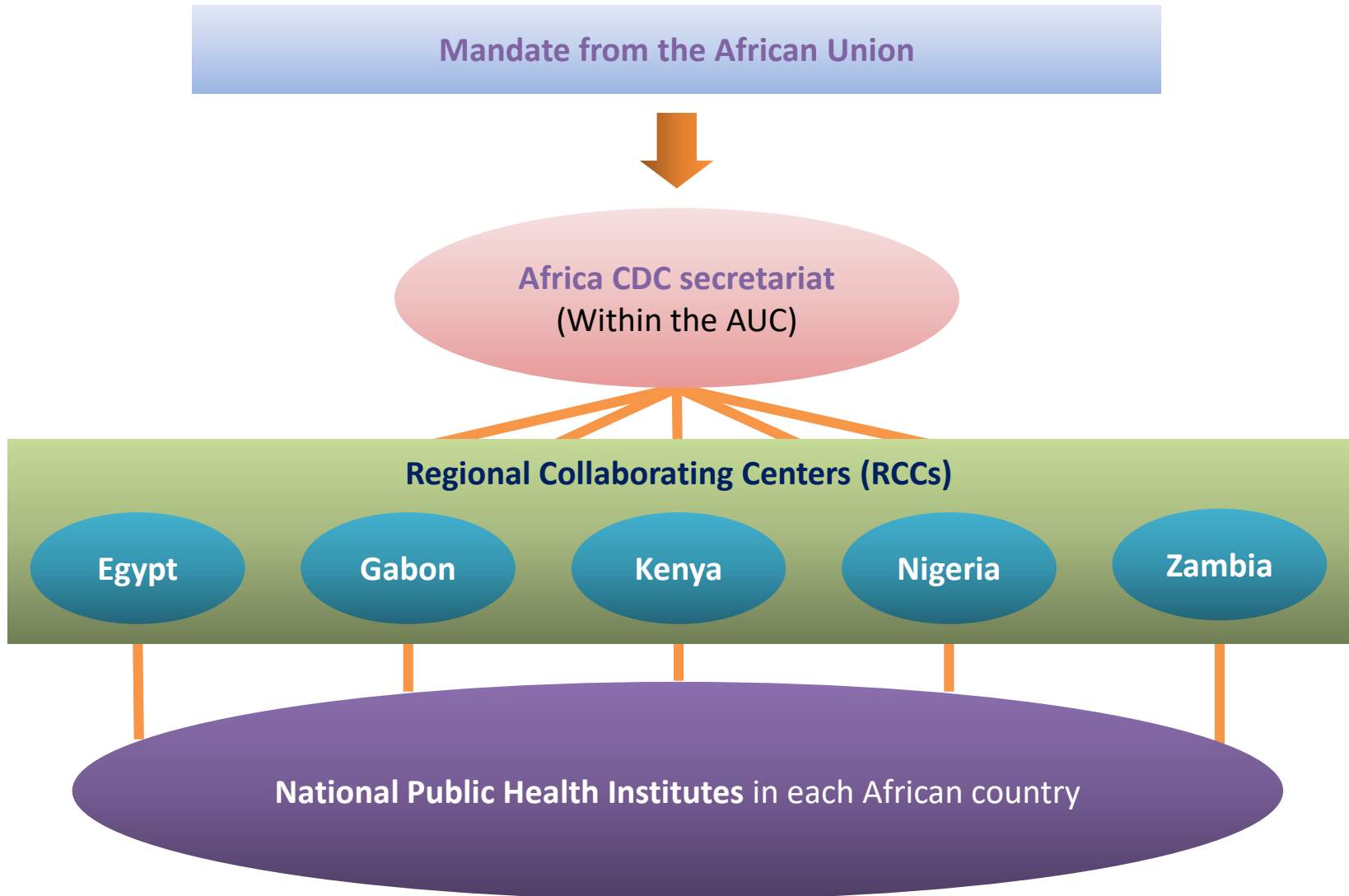




# BACKGROUND

- Africa CDC
  - Established by AU Heads of State and Govt. in January 2015 (AU/Dec.554 (XXIV))
  - Main role: promote and strengthen AU Member States to respond to emergencies, complex health challenges and conduct public health research

# Africa CDC Operating Model



**Note:** Roughly 25 African have formally established NPHIs and joined the International Association of National Public Health Institutes (IANPHI)



# ZAMBIA NATIONAL PUBLIC HEALTH INSTITUTE (ZNPHI)

- Specialized institution
- Public Health Centre of Excellence
- Support districts in improving the health of the people through
  - prevention of infection
  - surveillance
  - response to emergencies (outbreaks, man-made and natural disasters, public health events)
  - capacity building



## MANDATE FOR ZNPFI

- To efficiently prevent disease transmission, conduct surveillance and be prepared to respond to health threats and outbreaks
- To build national capacity to detect and respond effectively to disease threats and outbreaks based on scientific evidence
- To serve as RCC for Southern Africa



# Five strategic pillars

ZNPHI

Surveillance  
and Disease  
Intelligence

Public Health  
Emergency  
Preparedness  
and Response

National  
Public Health  
Laboratory  
Service

Information  
Systems

Public Health  
Research

Finance, Leadership, Management, Workforce, Partnership, & Innovation



# SURVEILLANCE AND DISEASE INTELLIGENCE

- Strengthen routine, event and facility-based surveillance to ensure timely reporting
  - Prompt detection
  - Data aggregation, analysis and use
  - Dissemination
- Integrated electronic data platform (DHIS2)
- Strengthen sentinel surveillance for selected conditions
- Develop a national surveillance data repository
- Cross border surveillance





# PUBLIC HEALTH EMERGENCY PREPAREDNESS AND RESPONSE

- Strengthen Public Health Emergency Operations Center (PHEOC)
  - Coordination
  - incident notifications and management
  - linkages to existing disaster management structures
- Ensure PHEOC policies, plans, procedures, and protocols conform to IHR
- Workforce development through the Field Epidemiology Training Program (FETP)



# **PUBLIC HEALTH LABORATORY SERVICE**

- Establish National Public Health Laboratory
- Strengthen existing laboratory systems for Public Health functions
- Establish and maintain a biobank
- Reduce the growing threat and stop the spread of Anti-Microbial Resistance (AMR)



# INFORMATION SYSTEMS

- Equip the national surveillance system to improve data quality
- Develop and maintain a robust and secure platform for health information sharing (local and international)
- Monitoring and evaluation
- Enhance capacity in scientific writing, knowledge translation and dissemination



# PUBLIC HEALTH RESEARCH

- Support the National Health Research Authority to address priority public health issues.
- Strengthen public health research capacity
- Create platform for dialogue between policy makers and researchers
- Conduct public health research and program evaluations



# ZNPFI AND HIV SURVEILLANCE

- Strengthen HIV Case-based surveillance
  - Protocol and guidelines
  - New diagnosis/initiation of treatment
  - Movement to second line
  - Viral load increase
  - Disease Progression
  - Death
- Stakeholder coordination
- Maintain database



**THANK YOU**